

East of Rapid on SD4

Railroad Buttes- South on 160 Ave.

1. Westside to Thompson Butte. Turn right toward Ward Dam Just before off-road riders.
2. Continuing south on 160 westside half mile before 2 green gates on east side.
3. Westside past 2 green gates to top of hill and right across cattleguard.
4. East through first green gate
 - 1st two track N. (Left) stock dam.
 - 2nd two track same dam.
5. Left split at end of fence toward northeast, crooked road, Across generally dry creek bed And up a steep hill. Left at top along ridge to creek for clams.
Right at dam along ridge to flat area— lots of drainages with rock
6. Straight at the end of fence and around hill to orange gate then left following road. There is a Really rough rocky section. Take it slow and around to a cattleguard, NE up a steep hill
First split in road to left will be roller coaster road, to another cattleguard. Lots of open areas

Right split takes you to open area that borders a large ranch on south.
Do not go through fence. Rancher has grazing lease and checks cattle on an ATV. He Has bison, but they are not close to fence.
7. Indian Creek, out SD44 east to Spring Draw Road. Stay on SDR until you come to ICR turn right and follow ICR until you see a cattleguard where ICR swings right. Cross the cattle guard. This is IC Allotment, about 40,000 acres, 19 crossings to Reservation fence.. This is a Traffic Managed Area. You may park not more than 30 feet Off the road. June trough September, cattle grazing. October through March bison. Selenite Clusters—When you see the old windmill, park under the old trees. Straight Ahead you will see an area where a high bank has collapsed into IC. The clusters Are behind the collapsed area. The high bank keeps eroding. Be careful, do not Do this alone.
8. Tom Frye Beds- Detail Map
9. Conata Basin—SD44 East past Scenic to CBRd- Follow trails . Lots of rock and Cactus.
10. Agate Allotment- Detail Map

11. Peterson Allotment— Detail Map
12. Wetlands Detail map
13. South of Rapid on SD 79 to Hermosa , take SD40 east to Grassland area just before Bridge over Cheyenne River. Do not go into Red Shirt Village...River gravels accessible.
14. Fairburn Beds.- South on SD79 to Fairburn and out to French Creek Picnic area Detailed Map
15. Ollelrichs— Detailed Map
16. Nebraska— SD71 to Sugarloaf Road—May visit Toad Stool Park and Hudson-Meng Bison Kill Site
17. Teepee Canyon- Just past Jewel Cave#
18. Fan Coral Rough US 16 West to Mud Springs Road Right about 5 miles
19. Horn Coral Rough—US85 West out of LEAD TO Boles Canyon RD and in about to miles
20. Rattle Rocks

X = Agate beds

Leitch

#15

To Martin

US. Hwy 18

To Rapid City

Hermosa

#14

Airbury

12.5

French Creek Rd.

To Rapid City

Farmingdale

#1

SDQA To scenic

Rapid Cr

RR outlet

Interior Beds

#10

Interior

CATTLE BRAND

7 miles to Interior

To Rapid City

5073

I90

Kadoka Tmi.

old 16

2/4 mi

Philip Jet.

Ex 143

Natl. Grasslands

3 1/2

WETA Beds #12

Weta

X X X X X

X X X X

White River

#11

1 3/4 mile to Philip

RANCH

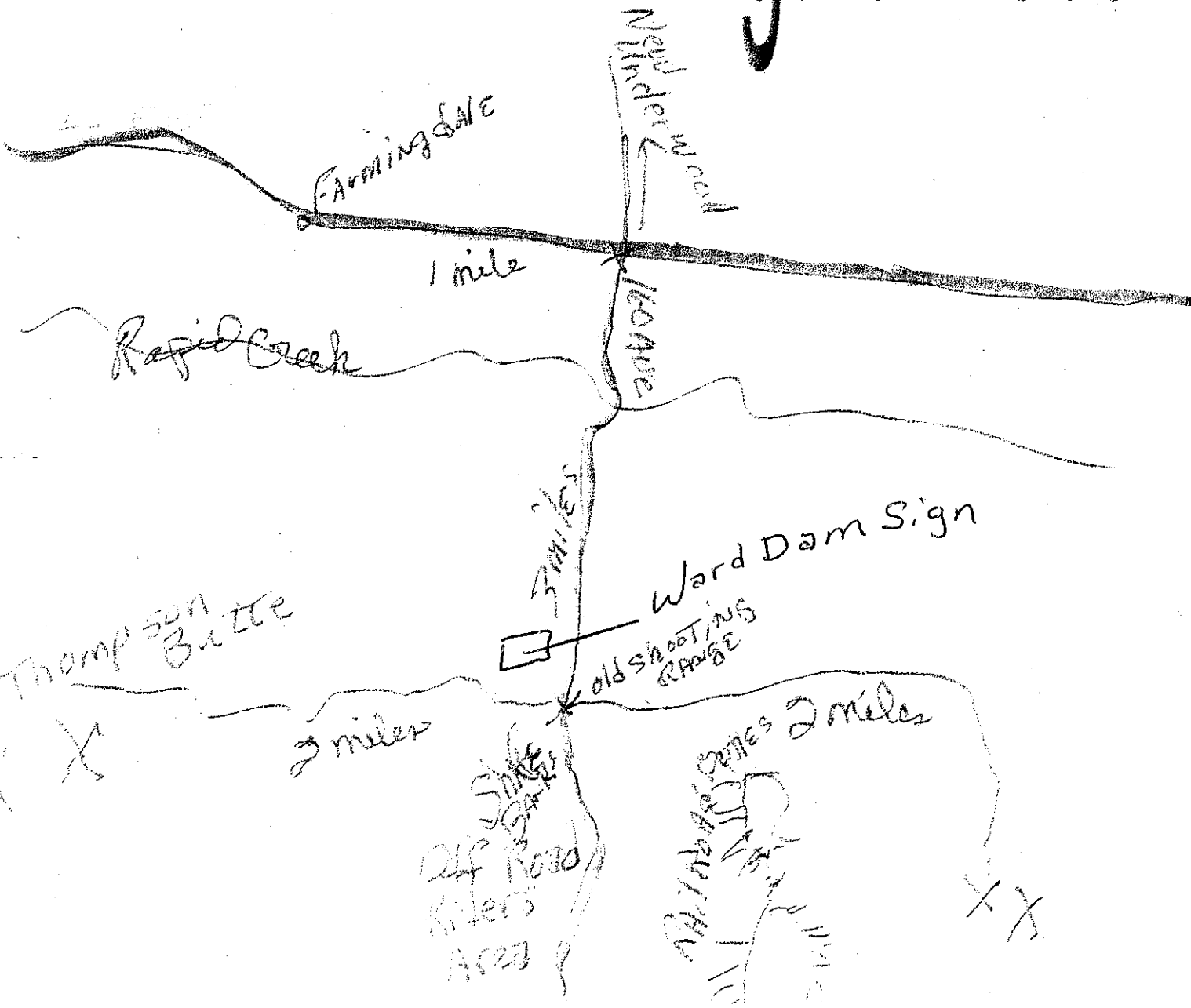
5075 SOUTH

I90 to KADOKA

WETA

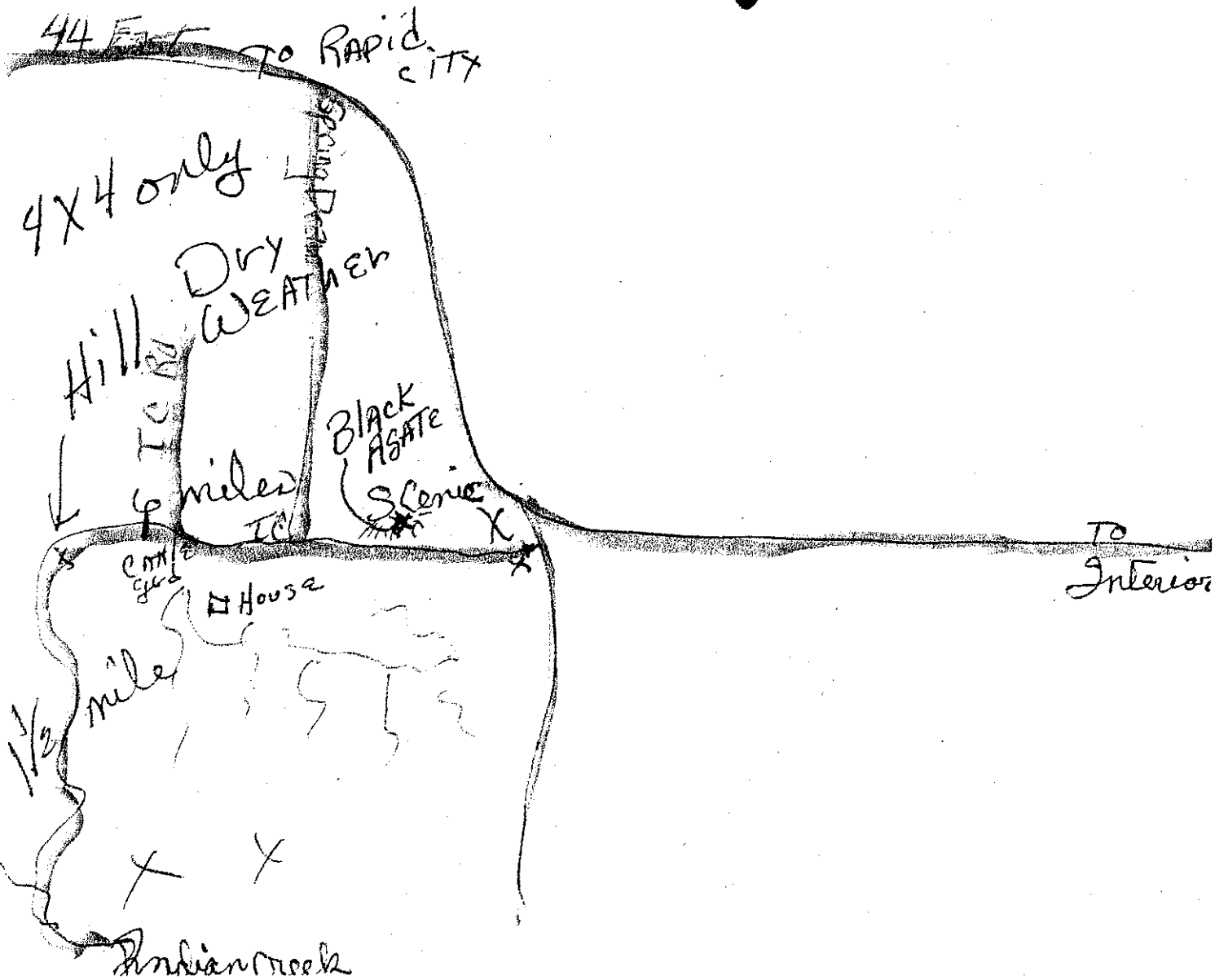
Area # 1

Railroad buttes Agate Beds



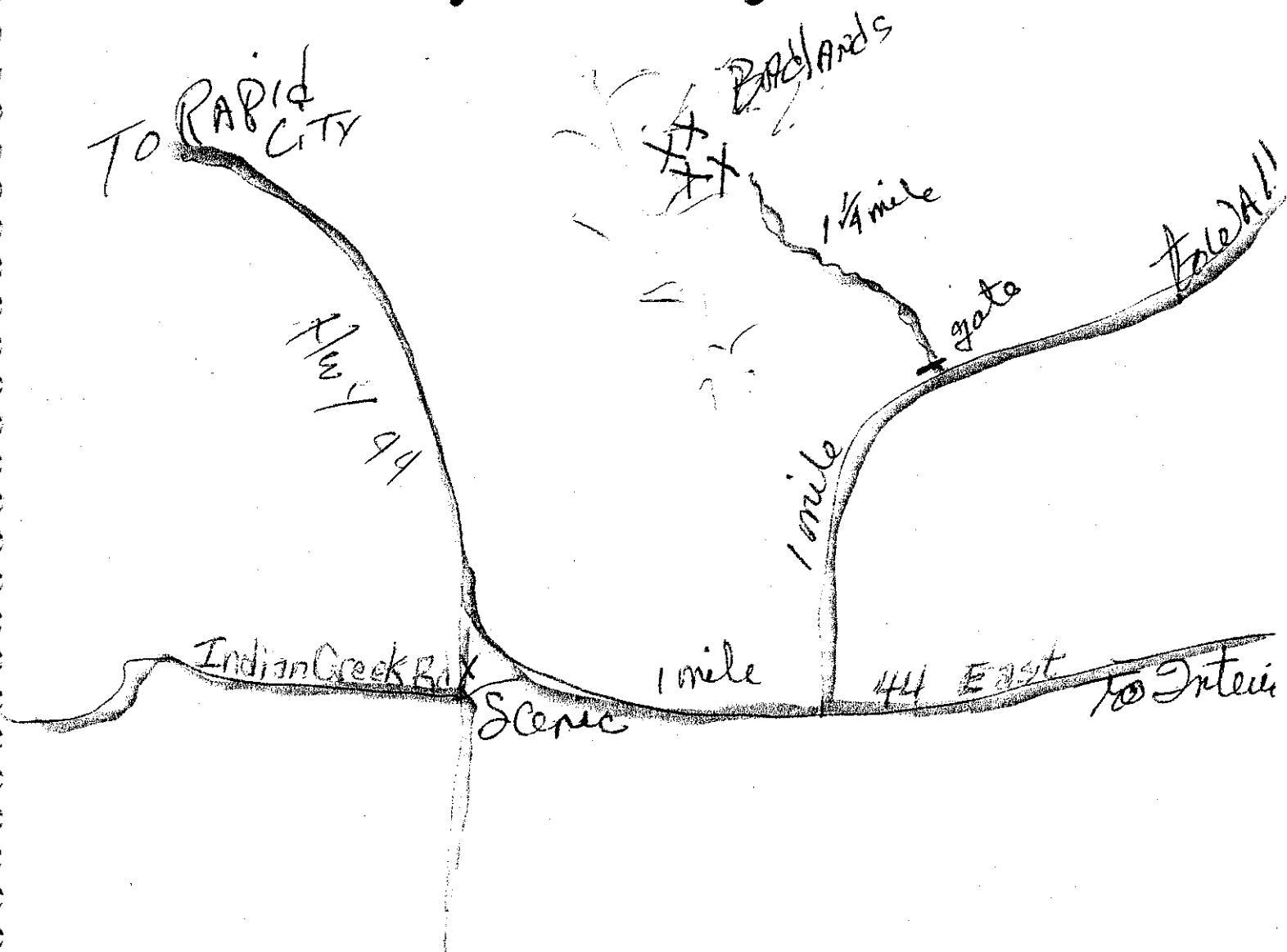
Area # 7

Indian Creek Agate Beds



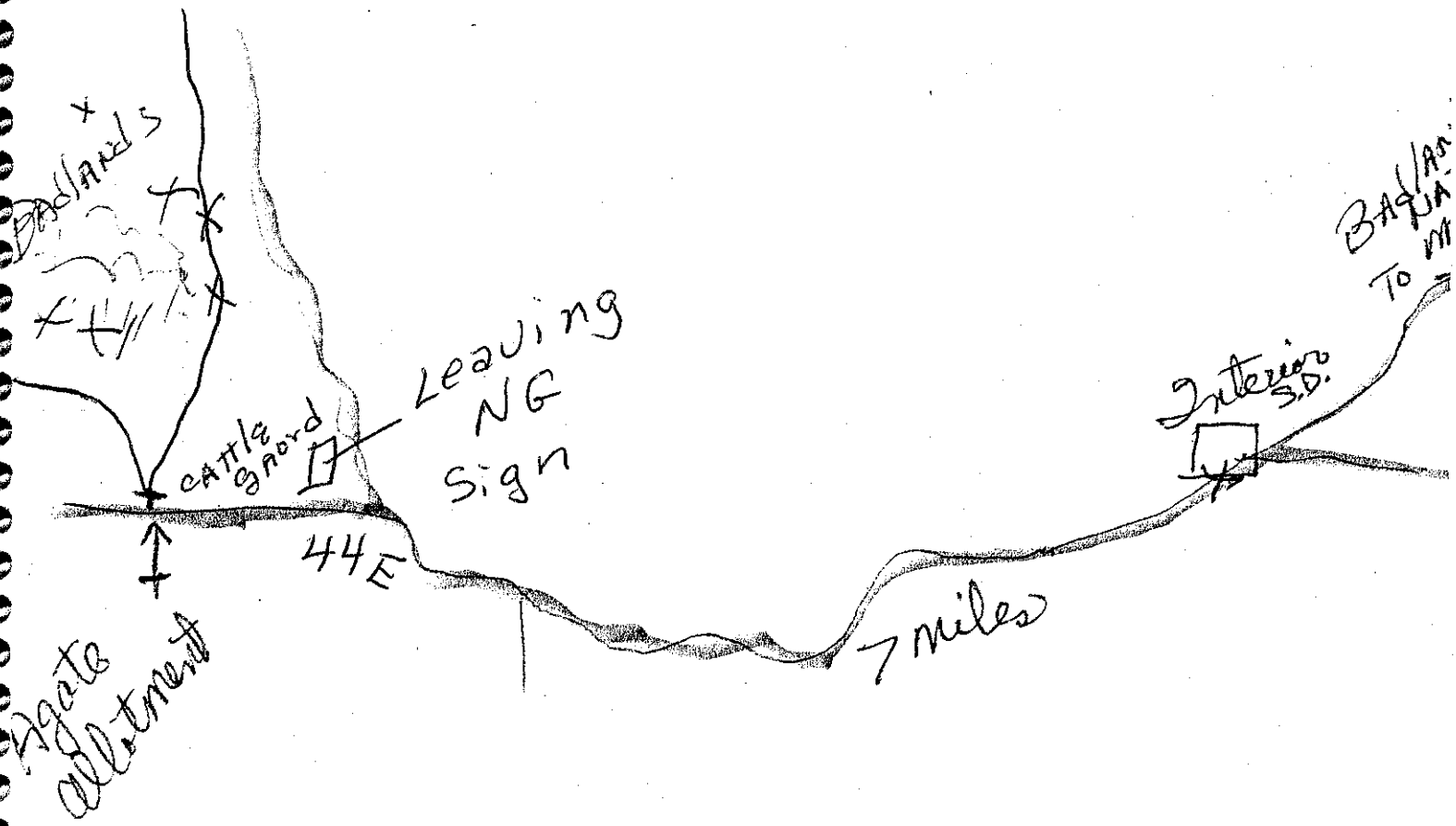
Area # 8

Tom Frye Agate Beds



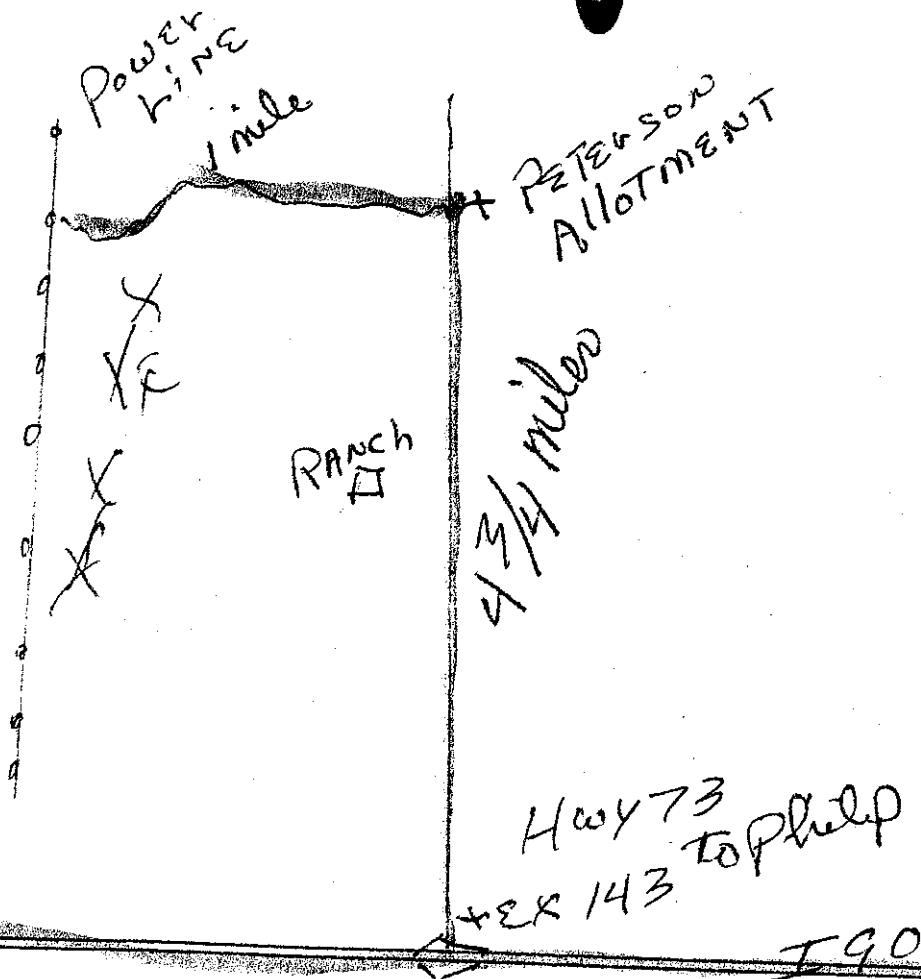
Area # 10

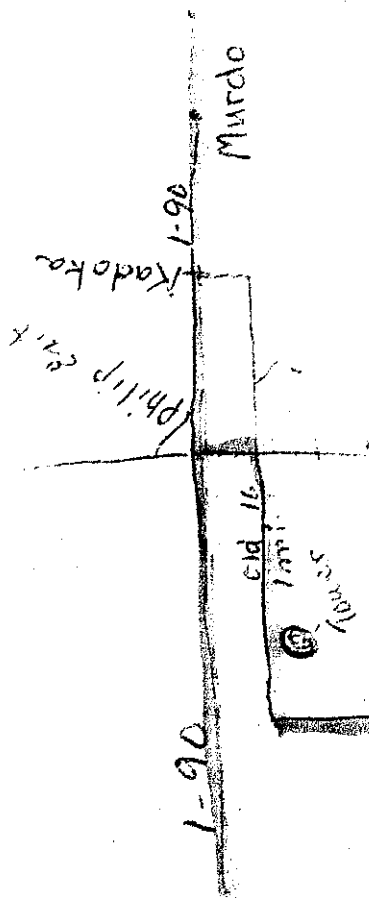
Agate Allotment Agate Beds



Area # 11

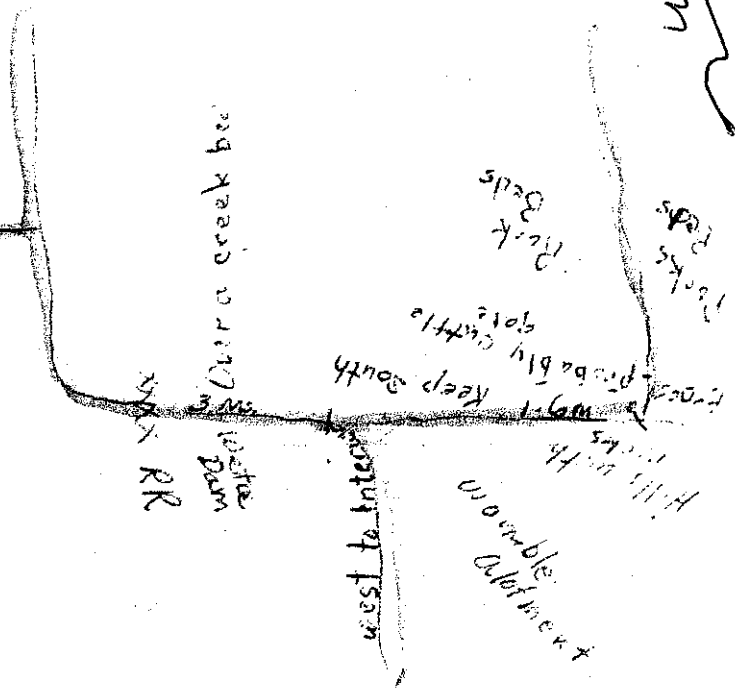
Peterson Agate Beds



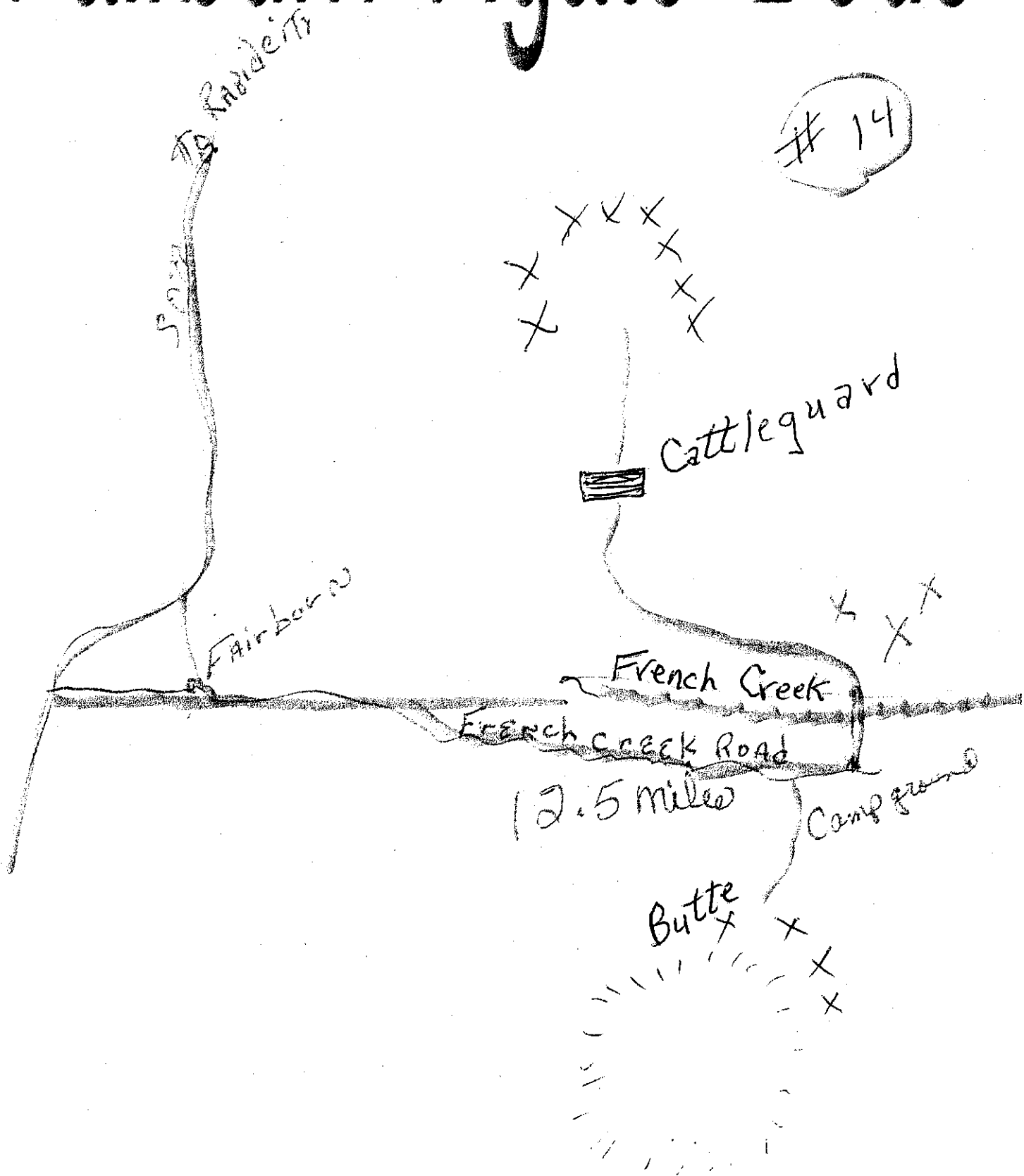


WETA
#12

White River



Fairburn Agate Beds



Area # 15

Oelrichs Agate Beds

