



THE AMMONITE



Newsletter of The Western Dakota Gem & Mineral Society – October 2010

FROM THE PRESIDENT, by Deb R



Although I plan to put in the occasional article for the Ammonite (as anyone can do - hint, hint), this is my last message as the club's President. I've learned a lot from my last 6 years in one office or another, and not just about gems, minerals and fossils. I learned how to over-come my stage fright in standing up in front of a crowd to conduct meetings, speaking to strangers and became a much more organized person. I also learned just how nice, interesting and sometimes eccentric 'rock' people can be. They are not afraid to let you hold their great find, even if they just licked it, and some are even willing to share their hunting tips and locations with you. It seems all rock people have stories to tell - some funny, some exciting and some lead by example, both in what to do and what not to do. They will share a ride with you, their lunch and their water. They won't even ask if you plan to drink it or spill a little on your rocks. These are people that understand the beauty and uniqueness of nature and can have a good time out with a few fellow rock-hounds or just out on their own communing with nature. They probably hear the same type of comments from their friends that I get from mine. "You're looking at the rocks, aren't you?" This is the one I get the most, and it's usually because I'm looking down at the landscaping and not up at the person I'm with. My answer is almost always "Yes", but that's okay, they usually understand.

Treasurer' Report for September 10, 2010



The club deposited \$517.98 and paid bills totaling \$3735.84, for a balance of \$13131.48. We have 57 families and 51 singles as paid members.

Show Report: We had income of \$7182.95, expenses of \$3827.68, for a net profit of \$3255.27. Income by Section as follows: Dealers: 2200.00, Tickets: 3688.50, Live Auction: 370.00, Silent Auction: 2869.50 less payments of 2233.20 for a net of 636.30, Front table sales: 21.45, and Kid's Section: 266.70.

We had one more expense come in for the show: \$69.28 for repairing the broken glass in two of the cases.

Secretaries Notes, September 10, 2010



Meeting started at 7:30pm with Introductions of guests and visitors

Minutes were approved by Stan H. 1st and Ellen T. 2nd

Reading of the treasurers report was approved by Carl and seconded by Mickey.

Rocky Mountain Federation- no new reports

Blue Ribbon - no new reports

Multi-use coalition- New wilderness Bill did not make it to the markup board, they may try again in January. Please continue to send letters and e-mails to our congressmen and women. Ellen also wanted us to be made aware of Bison grazing in Indian Creek during the winter months. It is not always posted when they are going to be in an area. Do not approach the Bison, they can be dangerous.

Webmaster Steve- no report . If you would like to put something on the website please contact Steve.

The members at this meeting voted that the membership list could be handed out among the members. This is so that if a member wanted to contact another member they can. Just think of all those rock hunting trips you missed out on because someone did not have your number. This list does not include e-mail addresses. The information on this list is not to be given out to non- members without their expressed permission.

Joe and Nancy Thompson were voted to be honorary lifetime members,

Dave confirmed with the Elks Club for our holiday party. We did not get in on time to get our 2nd Friday date so we will be having the Annual WDG&MS Christmas party on Friday, December 17th. Please get your meal chooses in at the next meeting. Chooses are Prime Rib \$16.99 or Chicken Cordon Blue for \$13.99. We need a head count asap.

There was a balloted vote on changing next year's show to the event center at the fairgrounds. The vote was 28 for the fairgrounds, and 4 for the Civic Center.

The New Show Committee was also voted on and passed.

~~~~~  
**Remember to come to the October meeting....It is time to vote again on our next terms offices.**

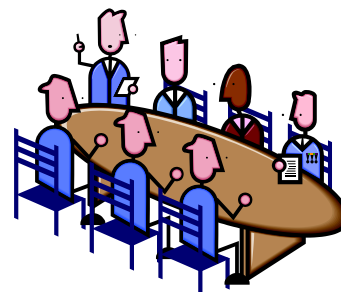
**Nominations received so far follow:**

|           |          |             |                        |
|-----------|----------|-------------|------------------------|
| President | Ellen T  | RMF Rep     | co's Dale J & Jan B    |
| Vice Pes  | Mike J   | Blue Ribbon | Martin O               |
| Treasurer | Rita H   | Multi Use   | Ellen T                |
| Secretary | Paula H  | Ammonite    | co's Hazel W & Paula H |
| 1st Board | Dale J   | Field Trips | Gene W                 |
| 2nd Board | Mickey S | Webmaster   | Steven E               |
| 1st Board | Stan H   | Librarian   | Steven E               |
|           |          | Historian   | Annette R              |



~~~~~  
September's meeting our 2011 Show Committee was elected and are as follows:

Chair	Mike J
co-Chair	co's Mickey S & Cliff N
Volunteer Coor	Jan G
Dealer Coor	co's Hazel W & Paula H
Publicity	co's Charles G & Becky B
Silent Auction	co's Linda S & Mickey S
Youth	Ellen T
Display/Exhibits	Dale J
Live Auction	co's Dale J & Paula H
Programs	Mike J



Announcements

It was voted to go to the Event Center at the Fairgrounds for the 2011 Show. The show date will be one weekend earlier than our usual weekend at the Civic.

The holiday dinner will be at the Elks again. Please note it will be the Friday AFTER our normal meeting night. Members need to get in their attendance and dinner orders.

The museum at the School of Mines is closed until sometime in November. The building is getting a new roof and everything is covered to protect the specimens.



RALEIGH, N.C. – An emerald so large it's being compared with the crown jewels of Russian empress Catherine the Great was pulled from a pit near corn rows at a North Carolina farm.

The nearly 65-carat emerald its finders are marketing by the name Carolina Emperor was pulled from a farm once so well known among treasure hunters that the owners charged \$3 a day to shovel for small samples of the green stones. After the gem was cut and re-cut, the finished product was about one-fifth the weight of the original find, making it slightly larger than a U.S.

quarter and about as heavy as a AA battery.

The emerald compares in size and quality to one surrounded by diamonds in a brooch once owned by Catherine the Great, who was empress in the 18th century, that Christie's auction house in New York sold in April for \$1.65 million, said C.R. "Cap" Beesley, a New York gemologist who examined the stone.

While big, uncut crystals and even notable gem-quality emeralds have come from the community 50 miles northwest of Charlotte called Hiddenite, there has never been one so big it's worthy of an imperial treasury, Beesley said.

"It is the largest cut emerald ever to be found in North America," Beesley said in a telephone interview from Myanmar, an Asian country rich in precious gems.

The discovery is a rarity for emeralds found not in the rich veins of South America and Asia but in North America, said Robert Simon, owner of Windsor Jewelers in Winston-Salem.

"Most of the stones that have come out have not been gem-quality that I would mount in jewelry," said Simon, who was part owner of a 7.85-carat, dime-sized emerald found in the same community in 1998 that has since been set in jewelry and sold to a private owner.

Terry Ledford, 53, found the roughly 2-inch-square chunk rimmed with spots of iron a year ago on a 200-acre farm owned by business partner Renn Adams, 90, and his siblings. The rural community of Hiddenite is named for a paler stone that resembles emerald.

"It was so dark in color that holding it up to the sun you couldn't even get the light to come through it," a quality that ensured an intense green hue once the stone was cut with facets that allowed light into the gem's core, Ledford said.

The North Carolina stone was cut to imitate the royal emerald, Ledford said. A museum and some private collectors interested in buying the emerald have been in contact, Ledford said.

Modeling an empress's emerald is likely to have less influence on the North Carolina stone's sale price than its clarity, color and cut, said Douglas Hucker, CEO of the [American Gem Trade Association](#), a Dallas, Texas-based trade association for dealers in colored gems.

"A 65-carat cut emerald from North Carolina is a big, big stone," he said. But "once an emerald is cut, it's subject to the same type of market conditions that any emerald would be."

Emeralds are part of North Carolina's mineral claim to fame, though other places in the U.S. also are rich in gems. Maine mines have yielded aquamarine and amethyst, Montana bears sapphires, Idaho is known for star garnets, and Arkansas has diamonds.

Associated Press

Thank You Thank You Thank You.....

Roger V put on a wonderful program with his wire wrapping expertise. Roger makes it look so easy. Roger also is sharing here with all of us a website that is loaded with a lot of information regarding wire wrapping. After about 2 hours of browsing I noticed that there are around 99 pages of wonderful information. Very informative Roger, I also noticed some of your "wraps" on one of the pages. Here is the site he has suggested to give us further inspiration. www.rocktumblinghobby.com

Our meetings are a great place with generous folks who love it when our members share their pictures, and talents...If you have something that you are considering sharing, weather it is a slide show, or how to make something...just remember...we don't bite!

October's Birthstone is the..... Opal

October's birthstone treats the eye to an explosion of shimmering colors, not unlike those of a magnificent rainbow following a summer rain. The Opal derives its name from the Latin word "opalus," meaning precious jewel. Prized for its unique ability to refract and reflect specific wavelengths of light, the Opal was called "Cupid Paederos" by the Romans, meaning a child beautiful as love. One legendary explanation for this gemstone's origin is that it fell from heaven in a flash of fiery lightning.



Classified Adds:

1925-1965 Loitwood rock, gem, mineral, and fossil collection .This collection is spread into our eastside museum annex, our garage, and in the basement. It is a space eater and has great weight too. Since it is inherited...I know only bear-bone facts and details as you would expect.

If interested please email Bernie Webb, Historian, @ bwebb@venturecomm.net - collection is located in Gettysburg, SD. ph. 605-765-9562

Webmaster - Steve E. Don't forget to check out our website at www.wdgms.org.

CLUB CALENDAR – Below is our calendar for the year. Although 2010 is now filled, you can always sign up for Door Prizes and Programs for 2011. Sign up at club meetings, or contact Ellen T. with your chosen month(s) and item(s). Contact Mike J, our Vice President, if you have an idea for a program or would like to present one.

MONTH	REFRESHMENTS	DOOR PRIZES	PROGRAM
JANUARY	Paul & Jan G	Paul & Jan	Ammonites by Neal Larson
FEBRUARY	Don & Annette R	Don & Annette R	Hole Drilling-Walter B
MARCH	Deb R	Mickey S	Intarsiq-Roger V
APRIL	Mills	Martin O	Rock hounding sites-Ellen T
MAY	Cathy A	Joebgen	Rock Carving-Walter B
JUNE	Becky B	Rita H	30 th SHOW-Last minute review
JULY	Rita & Lyle H		Event Center-Pam Teller
AUGUST	Summer Meal	Summer Meal	Summer Meal
SEPTEMBER	Hazel W	Gene and Hazel W	Wire Wrap-Roger V
OCTOBER	Calvin L	Deb R	Lost Wax Casting-Ildiko Wagner
NOVEMBER	Cliff N	Charles G	Faceted Gemstone ID's-Ellen T
DECEMBER	Holiday Dinner	Holiday Dinner	Holiday Dinner

Western Dakota Gem & Mineral Society 2009-2010 Officers and Chairpersons (area code 605)

President:	Deb R., 430 E. Idaho St., Rapid City, SD 57701.....	343-7850
Vice President:	Mike J., 5884 Legacy Ln., Rapid City, SD 57703.....	685-4847
Secretary:	Paula H., 533 Enchantment Rd., Rapid City, SD 57701.....	484-3754
Treasurer:	Rita H., 2569 Ambush Ranch Rd., Rapid City, SD 57703.....	348-3916
BRC SD Rep:	Martin O., 245 E. St. Charles St, Rapid City, SD 57701.....	721-7770
BHRMUC Rep:	Ellen T., 21653 Piedmont Meadows Rd., Piedmont, SD 57769.....	787-4659
RMFS SD Dir.:	Dale J., 14974 Back Country Trail, Rapid City, SD 57703.....	393-2011
Field Trip Chairs:	Paula & Stan H., 533 Enchantment Rd., Rapid City, SD 57701.....	484-1591
1 yr. Board Member:	Ellen T., 21653 Piedmont Meadows Rd., Piedmont, SD 57769.....	787-4659
2 yr. Board Member:	Dale J. 14974 Back Country Trail, Rapid City, SD 57703.....	393-2011
3 yr. Board Member:	Mickey S., 201 Patton St., Rapid City, SD 57701.....	791-1953
Newsletter Editors:	Steve & Linda S., 11809 Eastridge Hill Dr., Black Hawk, SD 57718....	716-4047
Historian	Annette R., 2701 Mystic Mt. Rd., Rapid City, SD 57702.....	348-8948
Librarian:	Steven E., P.O. Box 1123, Rapid City, SD 57709.....	791-2473
Webmaster:	Steven E., P.O. Box 1123, Rapid City, SD 57709.....	791-2473

Remember we have a new club address. This is to be used for all correspondence.

Western Dakota Gem & Mineral Society
PO Box 3620, Rapid City, SD 57709-3620

Meetings: Second Friday of each month, 7:30 p.m., Minneluzahan Senior Center, 315 N. 4th St., Rapid City
Dues: Family - \$15, Single - \$10, Payable by cash, check, or money order. Senior Citizens - free (does not include bulletin)

The purpose of our club is to promote interest and education in geology, mineralogy, paleontology, archaeology, and lapidary, to sponsor and provide means of coordination the work efforts of groups and individuals interested in these science fields.

THE AMMONITE

Official Publication of the
Western Dakota Gem & Mineral Society

Editors: Steve and Linda Shivers
11809 Eastridge Hill Drive
Black Hawk, SD 57718
shivers@rushmore.com

Affiliated with AFMS and RMFMS

Club Mailing Address:

Western Dakota Gem & Mineral Society
PO Box 3620
Rapid City, SD 57709-3620

Material in this newsletter may be used if proper credit is given.
Material for this newsletter must be given to the editor by the
25th of the month preceding that issue.

